

Subject: ECG Newsletter 1.22

Date: Tuesday, January 4, 2022 at 8:39:15 AM Eastern Standard Time

From: Esplanade Community Group

To: Bane, Mary Jo



Esplanade Community Group

ECG Newsletter 1.22

The Neighborhood

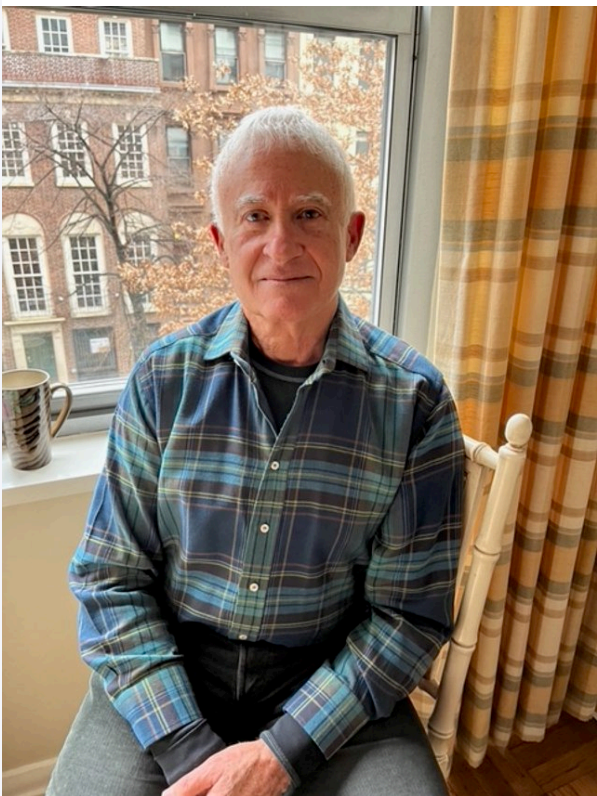
Triangle Park: Past, Present and Future

It was about 5 years ago when we first heard whispers of a park in the triangle space across the street from the Esplanade between Land Boulevard and First Street. Yes, an actual green park in that godforsaken acre filled with trucks, construction equipment, gravel, a few struggling flowers and a couple of trees.



In the southeastern end is a sign signifying an “Old Fashioned Southern Garden” created by George (a MIT physicist whose work was instrumental in satellite research) and Mary Pugh who had lived in the Esplanade for several years. [Read more.](#)

Meet Your Neighbors

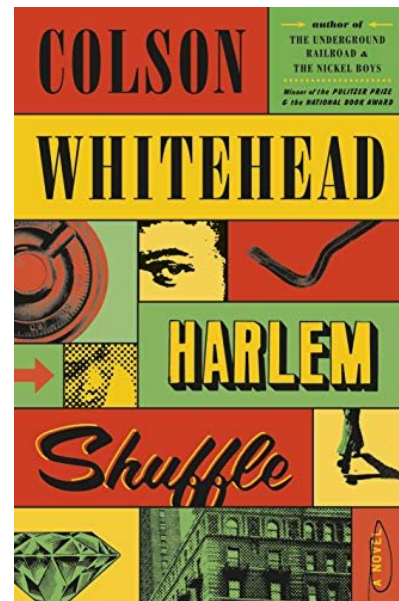


Larry Lieberman with his wife Gloria bought their Esplanade condo in 2009. Previously, they lived in a condo on Mount Vernon Street, "up the hill from Louisburg Square." Although they loved the Beacon Hill neighborhood, they wanted amenities like parking, concierge services, laundry facilities, and "Gloria wanted a pool and still be able to walk to her work at the Skinner Auction Gallery." [Read more.](#)

[Read more interviews with neighbors here](#)

Reading

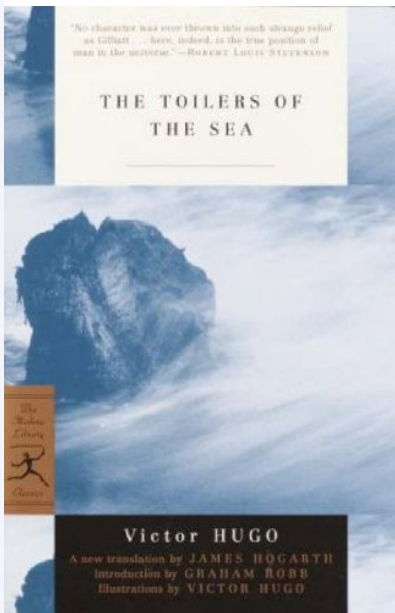
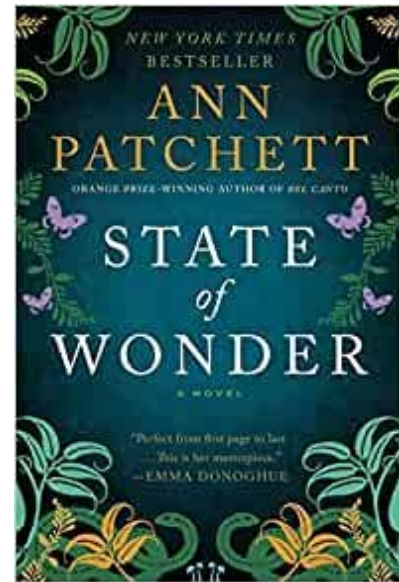
Harlem Shuffle is set in New York City in the 1960's. Uncivil race relations, criminal enterprise, and universal human striving are the taken-for-granted reality. Colorful characters from all walks of life cut corners and “bend” ethical principles to get ahead (including some who are desperately poor, some peacocks who flamboyantly display their new money, some quieter old money, and many characters who – like Ray – aspire to solid middle-class lifestyle). [Read more](#) (reviewed by Janis Gogan)



The Dutch House by Ann Patchett, completed in 2019, was a finalist in the 2020 competition for the Pulitzer Prize for fiction. The Dutch House itself, an elaborately decorated mansion located in suburban Philadelphia, is the figment of Ann Patchett’s active imagination.

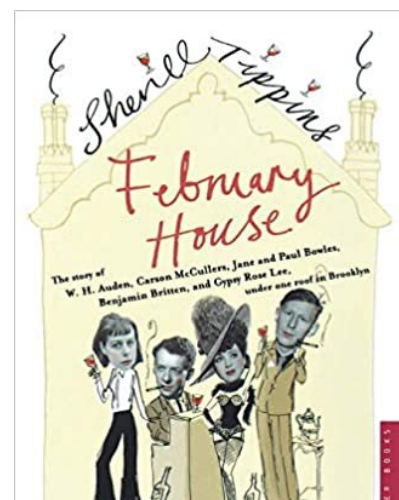
I recently discovered Ann Patchett and became an ardent fan in short order. She has the gift of transporting the reader into a universe of her making and bringing the characters who inhabit her novels to life in three dimensions.

[Read more](#) (reviewed by Susan Barron)



It's impossible to love *The Toilers of the Sea*. It's impossible to not love this book. It was written in 1866 when Victor Hugo had been exiled to the Channel Islands, Guernsey and Jersey. The story takes place in those islands in the early 1800's. [Read more](#) (reviewed by Larry Lieberman)

In *February House* Sherrill Tippins invites the reader to explore three questions in this story of an improbable literary salon sharing a ramshackle brownstone Victorian house in Brooklyn Heights during the early years (1940-41) of World War II: the creative process itself, how the context of one's environment affects creativity, and the



role of art and artists in society,
especially as war approaches. [Read
more](#) (reviewed by Jessie von Hippel)



[Read more book reviews here](#)

Eats



© Can Stock Photo - csp0613216

For those of you who fear that baking bread is more than you can handle, I submit this suggestion for the New Year. The beauty of this **Easy French Bread** is in its simplicity. Mixing, kneading - even part of the rising - are all done in a food processor. You are sure to enjoy it yourself and/or to be proud to serve to guests. Find the [recipe here](#)

[Read recent restaurant reviews from your neighbors here.](#)

Opportunities

Esplanade Community Listserv Now Set Up For All Our Residents

The Esplanade Community Group (ECG) is pleased to announce that we have started a Listserv for the benefit of everyone who

lives at the Esplanade and chooses to participate. Learn about [listservs](#) and how to sign up for ours [here](#)

Karma Kitja will host a Zoom “Using Real People in Historical Novels” on Sunday, January 9, depicting the themes in her two historical novels *Becoming a Woman of Substance* and *Beguiled*. E-mail her at karmakitaj@comcast.net for the zoom link. For more information see www.KarmaKitaj.com



New Year's Eve 2021 (thanks to Michael Altman)



Remember the winter of 2015?

VISIT OUR ECG [WEBSITE](#)

Missed any of our newsletters or updates? Catch up on them [here](#).

Want to share opportunities with your neighbors? Send to [Esplanade Community](#).

Esplanade neighbors and newcomers to the building, whether owners or renters, are welcome to be part of the ECG and to receive our Updates, newsletters, and invitations to ECG events. Please pass along this update to new folks. To get on (or off) our mailing list just email [Esplanade Community](#).

Have ideas for these newsletters and updates? Want to write something? Send to [Jessie](#), [Mary Jo](#) or [Jane](#). Next newsletter in March.

Esplanade Community Group , 75-83 Cambridge Pkwy, Cambridge MA 02142, United States

Powered by [Squarespace](#)

[Unsubscribe](#)