



Esplanade Community Group

ECG Newsletter 3.23

Meet Your Neighbors



Nancy and Bill Crowley became owners of their Esplanade condo in 2010. It wasn't a straight-line-move though. In 2008, Bill and Nancy decided to move into

Cambridge from their 3-story Victorian home in Newton where they had lived and raised their children for 35 years. They looked for a condo within a mile radius of MGH where Bill worked.

[Read more](#) (interview by Jane Hilburt-Davis)

[Read more interviews with](#)

neighbors here

The Neighborhood

The House of Odd Windows



In previous reports of my wanderings in “the neighborhood,” I wrote about people and places of interest in East Cambridge, or nearby. On this occasion, however, I want to extend my reach across the river.

What has caught my eye is the small, charming house at 24 Pinckney Street on Beacon Hill. It’s a remodeled carriage house and is popularly known as the House of Odd Windows, because none of its seven windows is the same size or shape. [Read more](#) (by Ken Winston)

Return of the Floating Wetland



Join the Esplanade Community Group (ECG) and Charles River Conservancy (CRC) to welcome the Charles River Floating Wetland back to its

mooring on **March 9**, from

10 to 12. (Rain date March 10) The CRC staff will be outside of the river side lobby with more information on the project and to answer questions. Coffee and pastries will be provided!

And an MIT event on March 28: Lessons [Learned on the Charles](#)

Triangle Park Update



A glance across Edwin Land Boulevard reveals the emergence of the long-awaited Triangle Park. Gone is the “god-forsaken acre filled with trucks, construction equipment,

gravel, a few struggling flowers and a couple of trees.” Trees and plantings are waiting to burst into bloom as soon as spring arrives. Lighting is being installed, and the paving is expected shortly. [Read more](#) (by Susan Barron)

The Esplanade

The Esplanade BOT “Be in the Know” Meeting

The Esplanade Board of Trustees sponsored what they called a

“Be in the Know” Zoom meeting with the residents on February 7. It was a chance for the residents to speak directly to Board members about issues concerning them. [Read more.](#)

Resident Group Update

The Esplanade Resident Group held a second meeting on January 18. Enthusiasm continued for the Group to form committees to work with management and the Board of Trustees on various issues. The meeting began with a restatement of the conclusions of the December Resident Group meeting. [Read more](#) (by Michael Altman)

Esplanade Environmental Study Group

The EESG is happy to report some promising developments in our efforts to encourage the Esplanade to reduce its carbon footprint. In addition, we would like to share with *ECG Newsletter* readers our agenda for helping our Board of Trustees and management to continue to make progress. [Read more](#) (by Bob Kagan)

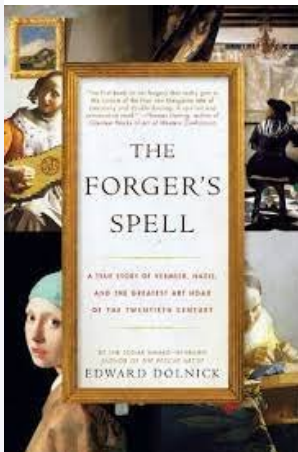
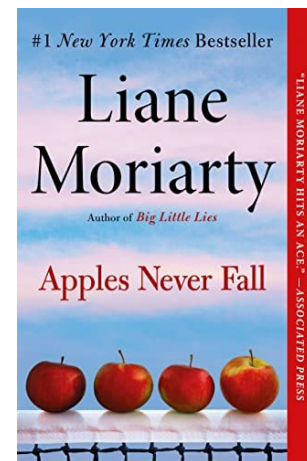
LET'S RESUME! ECG Aging in Place Group

The Esplanade Community Group's **Aging in Place Group** was formed in 2018 as a discussion forum and resource for residents who were considering all the dimensions of maintaining our independence, dignity, and health as we "age in place" here at

the Esplanade. Now may be a good time to restart at least some initiatives. To that end, we are requesting that you send your ideas/suggestions for resuming the Aging Place Group's initiative and activities to: jvhippel@me.com or sbbarron@gmail.com. We also request your responses to the Group's questionnaire to be posted on the Esplanade's ListServ and sent to the Group.

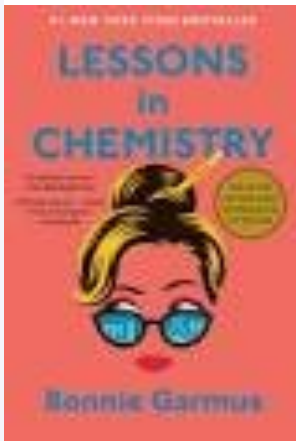
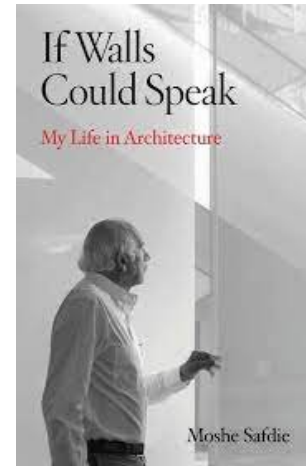
Reading

Sometimes serendipity selects the right book. A copy of a 2021 book called *Apples Never Fall* by Australian author Lianne Moriarty was discovered in the Esplanade exchange library and became the January reading for our book club. [Read more](#) (reviewed by Jane Gould)



The Forger's Spell by Edward Dolnick is a true story of Vermeer, the Nazis and the greatest art hoax of the twentieth century, as the title reads. This compelling story is about two failed artists (Hitler/Goering) and their obsession in acquiring all the known Vermeers (36). [Read more](#) (reviewed by Don Putnoi)

Unfortunately, our book club's review of *If Walls Could Speak* was mixed. I say "unfortunately" because Moshe Safdie's life and architectural accomplishments are nothing short of remarkable. Being a top-tier architect, alongside the likes of Kahn, Gehry, Wright, Meier, etc., requires creative genius, a vast amount of knowledge of many disciplines, and a willingness to risk failure, criticism, and great disappointment. [Read more](#) (reviewed by Larry Lieberman)



Lessons in Chemistry, a best-selling debut novel by Bonnie Garmus (age 64 when she published it last year), juxtaposes sources of inspiration for women against the darker themes of bigotry, abuse and hardship. Dark forces are ever-present in the story of a brilliant woman, her brilliant lover, their amazing daughter and a supernaturally smart dog. [Read more](#) (reviewed by Janis Gogan)

[Read more book reviews here](#)

Podcasts

What do you listen to? What's your favorite? Do you prefer your news in the written word or streaming? Have you thought of making your own Podcast?

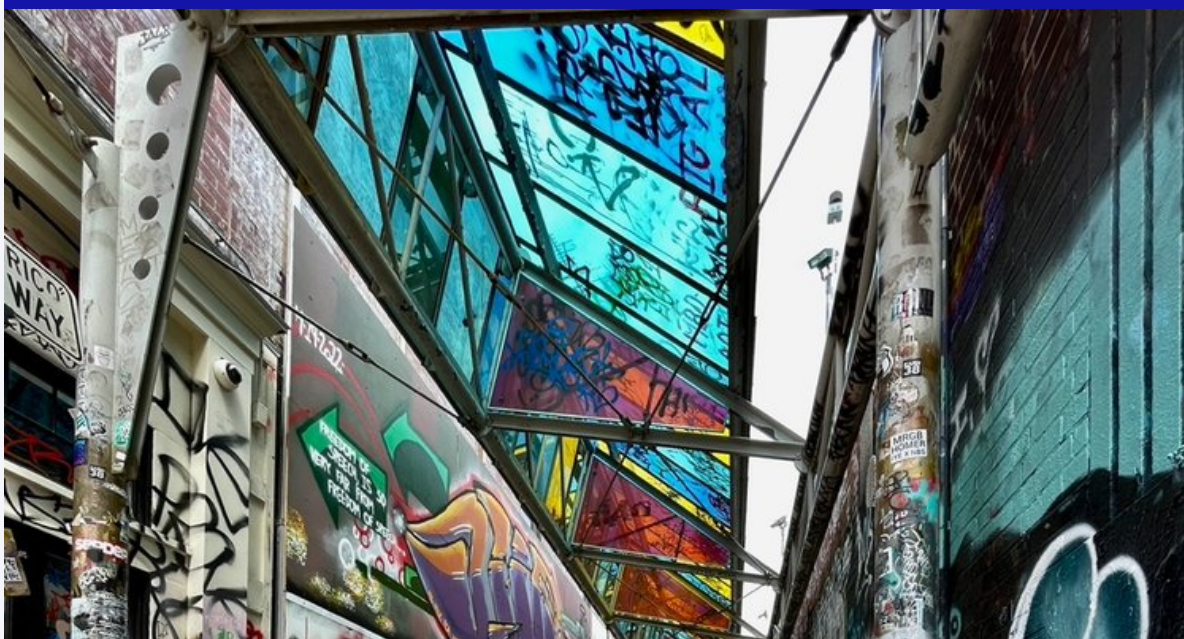


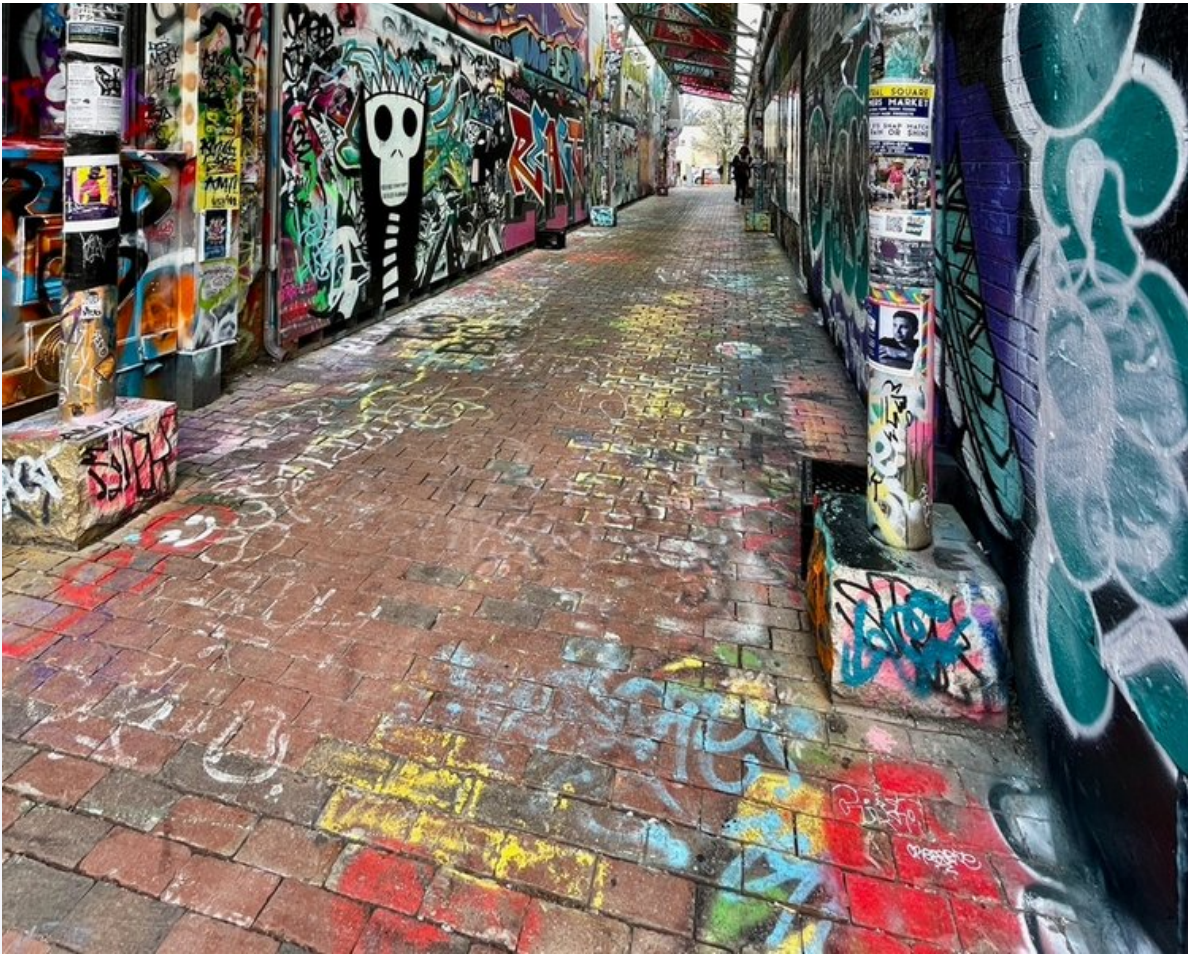
Send your podcast suggestions to [Jane](#). And read some of her new suggestions [here](#).

Opportunities

The Esplanade Community Group (ECG) is pleased to announce that we have started a **ListServ** for the benefit of everyone who lives at the Esplanade and chooses to participate. Learn about [listservs](#) and the details about ours [here](#). To sign up for the ListServ, email [Jessie](#) with your name, email and unit number.

Where is this?





Richard “Rico” B. Modica Way in Central Square. Photo by Jane Hilburt-Davis

VISIT OUR ECG [WEBSITE](#)

Missed any of our newsletters ? Catch up on them [here](#).

Want to share opportunities, news of transitions, or beautiful pictures with your neighbors? Send to [Esplanade Community](#).

Esplanade neighbors and newcomers to the building, whether owners or renters, are welcome to be part of the ECG and to

receive our Updates, newsletters, and invitations to ECG events. Please pass along this update to new folks. To get on (or off) our mailing list just email [**Esplanade Community**](mailto:EsplanadeCommunity).

Have ideas for these newsletters and updates? Want to write something? Send to Jessie, Susan, [Mary Jo](mailto:MaryJo), or Jane.

Esplanade Community Group , 75-83 Cambridge Pkwy, Cambridge MA 02142, United States

Powered by [Squarespace](#)

[Unsubscribe](#)